

GUTTER BROOM SEGMENTS

We offer a full line of gutter brooms for most sweepers. High impact injection molded blocks withstand the toughest sweeping conditions. Our brooms are filled with oil tempered gutter broom wire to meet our strict quality standards. This ensures a balanced fill and proper fit. Weights listed are without the box.

Elgin / Tymco <i>31-hole, 15.5 lbs/section</i>	Athey Mobil / Tymco <i>35-hole, 16.5 lbs/section</i>	Johnston / FMC / Wayne <i>32-hole, 17.5 lbs/section</i>
		
No. GBE-4T 4 section Elgin No. GBE-5T 5 section Elgin No. GBT-210 4 section Tymco 210 (18" wire)	No. GBM-4T 4-section Athey Mobil No. GBT-4T 4-section Tymco 600 No. TYMCO 36" sloped poly section	No. GBW-4 4-section Johnston / FMC / Wayne
Whirlwind / Johnston <i>30-hole, 15 lbs/section</i>	Snap-On	Wood Top
		
No. GBWW-2 2-section Whirlwind No. GB-650 2-section Johnston VT-650	No. GBS-8 8-section Elgin No. GBS-10 10-section Athey Mobil No. GBS-11 11-section FMC / Wayne No. GBS-12 12-section Johnston / FMC	No. VACALL 18" 1-piece No. VACALL-3 36" 3-piece No. GB-605 16" 1-piece No. 761211 Tennant 830 poly/wire No. 761211P Tennant 830 poly

BULK GUTTER BROOM WIRE

No. TODCO WIDE

Industry standard size of 26" x .025" x .125" fully hardened, oil tempered steel gutter broom wire. Packaged 100 lbs. per box.



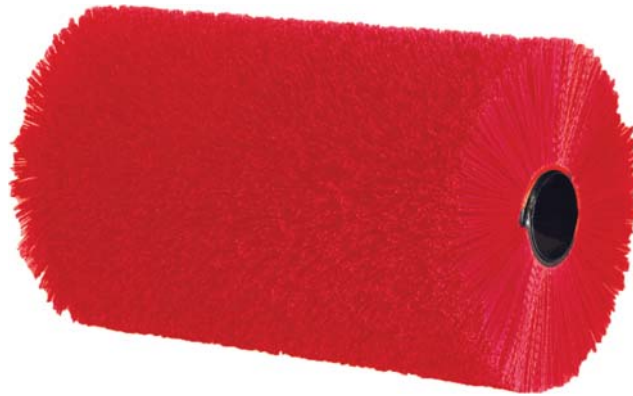
MUNICIPAL SWEEPER REPLACEMENT PARTS

We have major wear parts for most municipal street sweepers. These parts are too numerous to list. Please call us at 1.800.228.7076 with the *part number* and the *make, model* and *serial number* of your machine.

Conveyor Belts	Squeegees	Weldments
Conveyor Chains	Rubber Deflectors	Rollers
Sprockets	Strip Brushes	Drive Chains
Bearings	Dirt Shoes	Hoses

MAIN BROOMS TUBE BROOMS

Our tube brooms are made to the highest quality standards for long lasting performance. Each broom is a heavy polypropylene fill which provides consistent sweeping results.



Model	Part No.	Length	Model	Part No.	Length
Athey Mobil	M TUBE	58"	Elgin Crosswind	CROSSWIND	78"
Elgin Broom Bear	M TUBE	58"	Elgin GeoVac	WW TUBE	60"
Elgin Eagle	EAGLE	60"	Elgin Whirlwind	WW TUBE	60"
Elgin Pelican	E TUBE	66"	Elgin Whirlwind MV	WW-MV-TUBE	54"
Johnston 3000/4000	VANGUARD	56½"	Johnston 600	JOHNSTON-600-P	52½"
Tennant 830	761126	50"	Johnston 650	JOHNSTON-650-P	51"
Tennant Centurian	CENTURION	68"	Tymco 600	TYMCO 600	79"
			Vac/All	VACALL	40"

STRIP BROOMS AND CORES

Strip brush main brooms allow you to change the sweeper's main broom without removing the core. The plastic-back strips slide easily in to your core, saving you time. Strips are packaged in boxes which reduce shipping costs and allow for easy stacking and storing. Strip brooms are made of 100% polypropylene and are 100% recyclable.



Model	Part No.	No. / Set	Length	Mandrell*
Athey Mobil	MOBIL STRIP	18	58"	TSC58
Elgin Eagle	EAGLE STRIP	18	60"	TSC60
Elgin Pelican	ELGIN STRIP	18	66"	TSC66
Johnston 3000/4000	VANGUARD STRIP	13	56½"	TSC565V

* A mandrell is hollow and utilizes your tube broom compression arbor. We also have cores available that have drive plates welded in each end. *Please specify.*



No. WSP36
Walk-Behind Sweeper



No. CTM
Front-Mount Mechanical Drive for Commercial Turf Mowers



No. CTH
Front-Mount Hydraulic Drive for Commercial Turf Mowers



No. MRH
Front-Mount Hydraulic Drive for Compact Tractors



No. RMRM
3-Point Mount for Small Frame Compact Tractors (under 30 HP)



No. RHFA
3-Point Mount Mechanical Drive for Utility and Industrial Tractors (over 30 HP)



No. AH / CH
Front-Mount Hydraulic Drive for Utility and Industrial Tractors



No. MRHL
Front-Mount Hydraulic Drive for Compact Tractor Loaders



No. QCSS
Front-Mount Hydraulic Angle Sweeper for Skid-Loaders



No. SB
Hopper Sweeper Front-Mount Collector Sweeper for Skid-Steer



No. VRS
Heavy-Duty Dump Bucket Broom for Skid-Steer Loaders

ATTACHMENT SWEEPERS



We are an authorized Sweepster dealer. Call us for all your Sweepster replacement parts and brooms.

SECTIONAL BROOMS

We distribute a complete line of sectional brooms to meet your sweeping needs. We have brooms for most power sweepers including *Sweepster, Caterpillar, MB, Grace, Waldon, Broce, Rosco, John Deere, Kubota and Bobcat*. Sections are available in flat and convoluted. Polypropylene sections provide the best wear while wire adds aggressive digging action.

BRUSH SETS

18" x 4.4" DIAMETER BRUSH SETS (for John Deere 51)

Part No.	Brush Width	Bristle Type
01-0748	51"	Poly
01-0749	51"	Poly / Wire

22" x 6³/₈" DIAMETER BRUSH SETS (for Bobcat) order by individual sections — see page 47

24" x 6³/₈" DIAMETER BRUSH SETS

Part No.	Brush Width	Bristle Type	Sections/set
01-0012C	3 ft	Poly convoluted	20
01-0016C	3 ft	Poly / wire convoluted	11 / 9
01-0803	4 ft	Poly convoluted	26
01-0804	4 ft	Poly / wire convoluted	14 / 12
01-0805	5 ft	Poly convoluted	33
01-0806	5 ft	Poly / wire convoluted	17 / 16
01-0807	6 ft	Poly convoluted	40
01-0808	6 ft	Poly / wire convoluted	21 / 19

24" x 7" DIAMETER BRUSH SETS order by individual sections — see page 47

26" x 8" DIAMETER BRUSH SETS order by individual sections — see page 47

32" X 10" DIAMETER BRUSH SETS

CONVOLUTED				FLAT			
Part No.	Brush Width	Type	Sections/set	Part No.	Brush Width	Type	Sections/set
01-0272C	5 ft	Poly	29	<i>Order by individual sections — see page 47</i>			
01-0274C	5 ft	Poly / Wire	15 / 14	<i>Order by individual sections — see page 47</i>			
01-0020C	6 ft	Poly	35	01-0020	6 ft	Poly	40
01-0022C	6 ft	Poly / Wire	18 / 17	01-0022	6 ft	Poly / Wire	21 / 19
01-0079C	7 ft	Poly	41	01-0079	7 ft	Poly	47
01-0081C	7 ft	Poly / Wire	21 / 20	01-0081	7 ft	Poly / Wire	24 / 23
01-0080C	8ft	Poly	47	01-0080	8ft	Poly	54
01-0082C	8ft	Poly / Wire	24 / 23	01-0082	8ft	Poly / Wire	28 / 16



TIPS FOR EXTENDED BRUSH LIFE

Remember to check and adjust:

Brush Level

Brush life can decrease 50% or more if you don't level your brush frequently. Brush level should be checked before operating. Level swing plate front-to-back and side-to-side. Then level cross tube on brush head. See your sweeper manual for leveling instructions.

Brush Down Pressure

Improper down pressure can decrease brush life by 95%. The tips of the bristles provide the most efficient sweep. When too much down pressure is applied, the brush is working with the sides of the bristles, not the tips. This eliminates the natural flicking action of the tips and reduces sweeping effectiveness.

Check daily for the correct down pressure. Before starting a sweeping job, park the vehicle and sweeper on a level area. Lower the rotating brush down to the ground and then lift. Check the cleaned area below the brush. A brush with correct down pressure will clear a 2 to 3 inch path.

Speed of Vehicle When Sweeping

Improper ground speed not only damages the brush, but can also damage sweeper components. If ground speed is too fast, the debris piles up in front of the brush. Material is bulldozed not swept. This bulldozing causes excessive pressure on the brushes, core, drive lines and frame.

Always sweep at a high enough brush speed and low ground speed to effectively discharge the material being swept.

INDIVIDUAL SECTIONS

INDIVIDUAL BROOM SECTIONS

22" AND 24" DIAMETER SECTIONS



Part No.	OD	ID	Type	Material
01-5675	22"	6 ³ / ₈ "	Convoluted	Poly
01-5768	22"	6 ³ / ₈ "	Flat	Poly
01-0831	22"	6 ³ / ₈ "	Convoluted	Wire
01-5796	24"	6 ³ / ₈ "	Convoluted	Poly
01-0769	24"	6 ³ / ₈ "	Convoluted	Wire
01-0147		6 ³ / ₈ "	Spacer	
01-0744C	24"	7"	Convoluted	Poly
01-0745C	24"	7"	Convoluted	Wire
01-0783	24"	7"	Flat	Poly
01-0745	24"	7"	Flat	Wire

26" DIAMETER SECTIONS

Part No.	OD	ID	Type	Material
01-5847	26"	8"	Convoluted	Poly
01-5848	26"	8"	Convoluted	Wire

32" DIAMETER



Part No.	OD	ID	Type	Material
01-0002C	32"	10"	Convoluted	Poly
01-0002	32"	10"	Flat	Poly
01-0006C	32"	10"	Convoluted	Wire
01-0006	32"	10"	Flat	Wire
01-0146		10"	Spacer	

36" DIAMETER

Part No.	OD	ID	Type	Material
01-0003C	36"	10"	Convoluted	Poly
01-0003	36"	10"	Flat	Poly
01-0007C	36"	10"	Convoluted	Wire
01-0007	36"	10"	Flat	Wire
01-0146		10"	Spacer	



Michael Todd
& COMPANY, INC.

FILL MATERIAL

We offer a full line of superior replacement brushes to fit *Tennant, Nilfisk-Advance, Alto, Clarke, American Lincoln, Power Boss* and other types of sweepers. Brooms are manufactured to meet or exceed OEM specifications and are guaranteed against defects in materials and/or workmanship.

IN PLANT SWEEPER & SCRUBBER BRUSHES



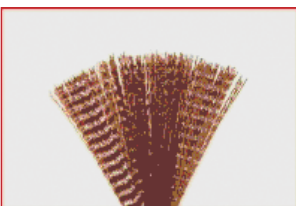
Proex

Good filament for sweeping either indoor or out, including damp or humid environments. Not recommended for high temperature applications but a very good all-purpose filament. Proex is a polypropylene and derives its name from the "X" shape of its bristle. Most Proex filament comes in a mixture of tan and black bristles in three diameters.



Nylon

Excellent brush life when used primarily in dry sweeping conditions. Very good on rough surfaces or high-temperature environments because of its durability and higher melting point versus other filaments. Performance is less when conditions are wet or humid.



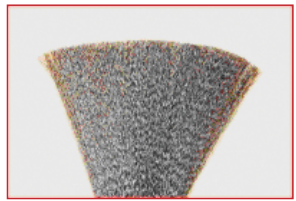
Poly

Sometimes called "Prolene" or "Prostran", this is a very good filament for most soils and surfaces. It is more economical than Nylon from a cost standpoint but is not recommended for sweeping higher temperature debris like Nylon is.



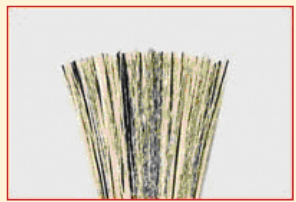
Union Fiber

Comprised of a mixture of Tampico (tan) and Bassine (dark brown) fibers, this material is excellent for dust control and sweeping fine debris. Because it is a natural fiber, Union has a relatively shorter wear life versus other synthetic materials. Union can come either dyed or un-dyed in which the Bassine fiber is either dark brown (dyed) or rust (un-dyed).



Crimped Wire

In either a single-plane or double-plane crimp, this filament is used in applications needing extra cutting action for heavy duty sweeping of compacted dirt. Recommended for low dust sweeping on unsealed surfaces.



Proex and Wire

One of the most versatile and widely used filament mixtures. The Proex provides good all-purpose sweeping for medium to heavy debris while the wire provides a light cutting action for compacted soils.



Union and Wire

Union and Wire provides better dust control versus Proex and Wire, but has a shorter wear life as described under Union above.

Flat Wire

Used only on side brushes and primarily in outdoor applications. This material is made from flattened spring steel wire and is very aggressive. An excellent material for digging heavy compacted debris away from the edges of buildings and curbs.

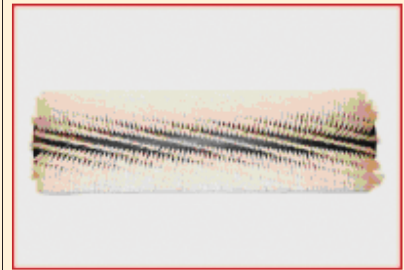
FILL PATTERNS

IN PLANT SWEEPER & SRCUBBER BRUSHES

The **Double Row (DR)** fill pattern is the most popular for main sweeps because of its versatility. This design allows the space between each row to trap bulky items while the bristles are working to pick up the finer debris. Rows vary from 5, 6, 8, 9, 12 or 16 depending on the brush and sweeper.



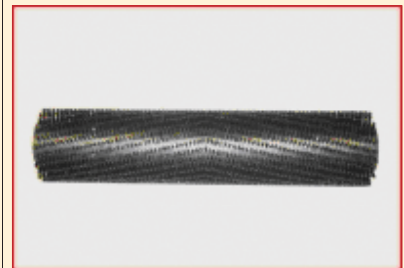
Single Row (SR) or "full-fill" brushes are more designed to pick up fine debris with not much litter. The high-density pattern of this brush makes it an ideal choice for sweeping in dusty and/or sandy conditions and rows vary from 8, 18 or 24.



A **Patrol Brush** has a "V" pattern and is designed primarily for high-speed sweeping. Fewer rows (5 double row, 5 triple row or 4 quadruple row) allows for more space between rows which enables the brush to more effectively pick-up litter at faster speeds. Ideal for indoor or outdoor parking lot applications.

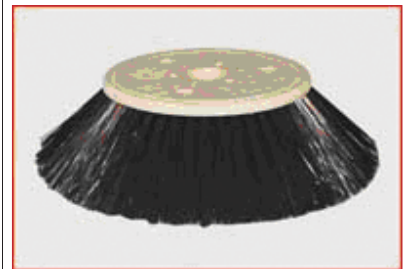


Main Scrubbers use a full-fill design that keeps bristles on the surface at all times. The "V" pattern that is used on most brushes directs the solution to the center of the scrubbing path as the bristles agitate the debris loose from the ground. The filament length on this brush designates it as a "scrubber" since the short bristle isn't able to "flick" or "sweep" the debris off the ground.



New and Improved!

A **Side Brush** has bristles flaring out around its edge, which allows it to reach into corners and against walls and curbs. The purpose of this brush is to throw debris out in front of the sweeper so that the main brush can pick it up. Popular patterns are 2, 3 or 4 single rows.



A **Rotary Brush** or "side scrubber" comes in 4 to 11 single rows depending on the diameter of the block. The term "rotary" means that this brush is designed not to "sweep" like a side brush, but to spin and agitate debris loose from the ground with its dense and stiff bristles.

